



# Network Discovery Tool

Automatic scanning of network assets.

## DESCRIPTION

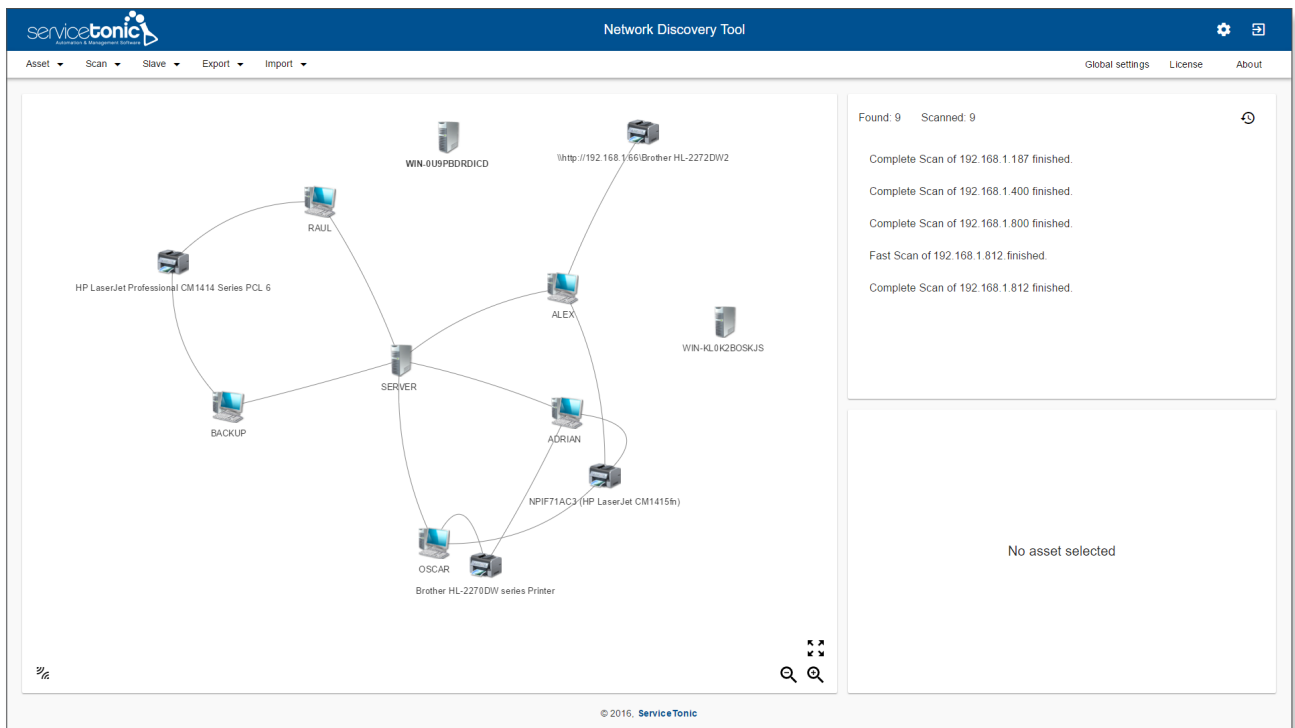
It is a network **scanning tool** that allows you to:

- **Discover automatically** your network equipment (computers, servers and domain servers).
- **Generate an inventory** of Windows computers, with printers, monitors, keyboards, mouses, etc., connected and software installed.
- **Graphically** and interactively display the relationship between the devices.
- **Integrate** automatically assets with the CMDB.
- **Run multiple scan servers** for distributed environments.
- All this, **without installing additional programs** on client machines.

## KEY BENEFITS

Use the **Network Discovery Tool** to:

- **Load and update your assets** into the CMDB.
- **Increase control** in network management.



View your network equipment as an interactive chart and synchronize your inventory with the CMDB.

ID	Asset type	Name	IP	OS	Last seen	Last update	Actions
1	PRINTER	NP171ACJ (HP LaserJet CM1415n)			1/23/2017, 2:52:53 PM	1/23/2017, 12:47:40 PM	
2	PRINTER	Brother H4220ZDW Series Printer			1/23/2017, 2:52:44 PM	1/23/2017, 2:52:44 PM	
3	PC	MARKETIN01	192.168.1.38	Microsoft Windows 10 Pro	1/23/2017, 2:52:26 PM	1/23/2017, 2:52:26 PM	
4	SERVER	BE06SERVER01	192.168.1.42	Microsoft Windows Server 2008 R2 Datacenter	1/23/2017, 2:52:28 PM	1/23/2017, 2:52:28 PM	
5	PRINTER	HP LaserJet Professional CM1414 Series PCL 6			1/23/2017, 2:52:39 PM	1/23/2017, 12:47:45 PM	
6	PC	SALES01	192.168.1.44	Microsoft Windows 7 Professional N	1/23/2017, 2:52:27 PM	1/23/2017, 2:52:27 PM	
7	SERVER	DCSERVER01	192.168.1.34	Microsoft Windows Server 2008 R2 Datacenter	1/23/2017, 2:52:27 PM	1/23/2017, 2:52:27 PM	
8	PC	R9901	192.168.1.180	Microsoft Windows 7 Ultimate N	1/23/2017, 2:52:34 PM	1/23/2017, 2:52:34 PM	
9	PC	SALES02	192.168.1.166	Microsoft Windows 10 Pro	1/23/2017, 2:52:39 PM	1/23/2017, 2:52:39 PM	
10	SERVER	IT01	192.168.1.284	Microsoft Windows Server 2012 Standard	1/23/2017, 2:52:42 PM	1/23/2017, 2:52:42 PM	
11	MONITOR	HMP 303812K2			1/23/2017, 2:52:51 PM	1/23/2017, 12:47:59 PM	
12	MONITOR	HMP 303812M9			1/23/2017, 2:52:51 PM	1/23/2017, 12:47:59 PM	
13	SOFTWARE	64 Bit HP CIO Components Installer			1/23/2017, 2:57:47 PM	1/23/2017, 12:53:00 PM	
14	SOFTWARE	ASUS GPU Tweak			1/23/2017, 2:52:51 PM	1/23/2017, 12:47:59 PM	
15	SOFTWARE	Adobe Acrobat Reader DC - Exported			1/23/2017, 2:53:20 PM	1/23/2017, 12:48:26 PM	
16	SOFTWARE	Adobe Refresh Manager			1/23/2017, 2:57:47 PM	1/23/2017, 12:53:00 PM	
17	SOFTWARE	Centos 9			1/23/2017, 2:52:51 PM	1/23/2017, 12:47:59 PM	

Scan your Windows devices, computers, servers, printers and monitors. Also get information about connected and installed software.

Property	Value
AddressWidth	64
Architecture	9
Availability	3
Caption	Intel(R) Family 6 Model 60 Stepping 3
CpuStatus	1
DataWidth	64
DeviceID	CPU0
ExtClock	100
Family	1
L2CacheSize	512
Level	6
Manufacturer	GenuineIntel
MaxClockSpeed	3500
Name	Intel(R) Core(TM) i3-4160 CPU @ 3.60GHz
ProcessorID	BFBFBFF000006C3
ProcessorType	3
Revision	15363

Access details of each discovered asset.

## DETAILS

### Automatic discovery of network equipment

Full scan of all your Windows computers such as computers, monitors, printers, keyboards, mice, servers and software.

### Inventory and graphic display

Scanned asset inventory with graphical display of the relationships between CI.

### Multiple scan servers for distributed environments

Have multiple slave scan servers beyond firewalls to scan different networks.

### Automatic integration with the CMDB

Quick synchronization with ServiceTonic's CMDB.

**FREE DOWNLOAD!**

Download ServiceTonic Network Discovery Tool:  
[servicetonic.com/network-discovery-software/](http://servicetonic.com/network-discovery-software/)

**ServiceTonic Network Discovery Tool** allows you to scan your Windows computers, generate inventory and visualize the details and relationships between devices in an interactive map.



**USA**  
 4N 2nd Street, Unit 210  
 San Jose, CA 95113  
 T: +1 408 906 8088

**Barcelona**  
 Bailén, 71 bis, 6º 1ª  
 08009 Barcelona - España  
 T: +34 93 242 03 50

**Madrid**  
 Paseo de las Delicias, 30, 2ª  
 28045 Madrid - España  
 T: +34 91 112 67 20

[www.servicetonic.com](http://www.servicetonic.com) | [servicetonic@servicetonic.com](mailto:servicetonic@servicetonic.com)